

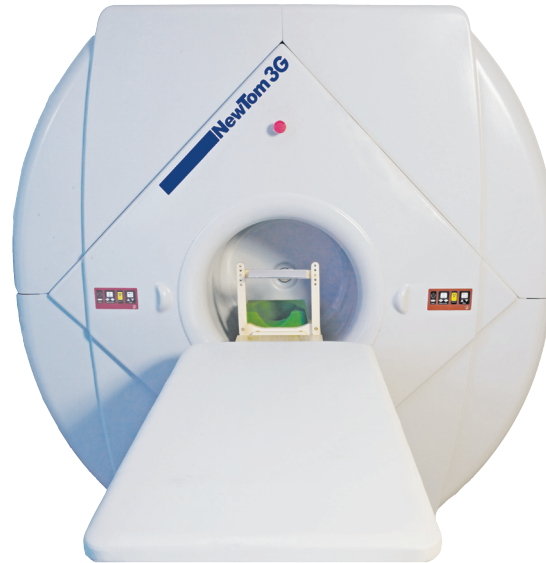
NewTom 3G

Cone Beam 3D Imaging System

The NewTom 3G provides three fields of view, 6", 9", and 12" (cephalometric), available in one machine. NewTom 3G is a full-size scanner that delivers a volume size of 8.5" as well as the ability to display additional FOVs with volume sizes of 6.5" and 4.1" and increased resolution. The 12-bit 3G uses a 1024 x 1024 acquisition matrix with voxel sizes from .2mm to .4mm. NewTom 3G remains the scanner that offers the largest FOV and reconstructed volume (20cm diameter sphere), while offering the option to select smaller regions of interest.

Setting the standard in supine cone beam imaging, the NewTom 3G has no visible moving parts that cause eye-tracking or head movement. Images are acquired with the patient lying down, resulting in less movement for greater image accuracy. The NewTom 3G enhances patient comfort and safety while increasing the efficiency of the scanning procedure.

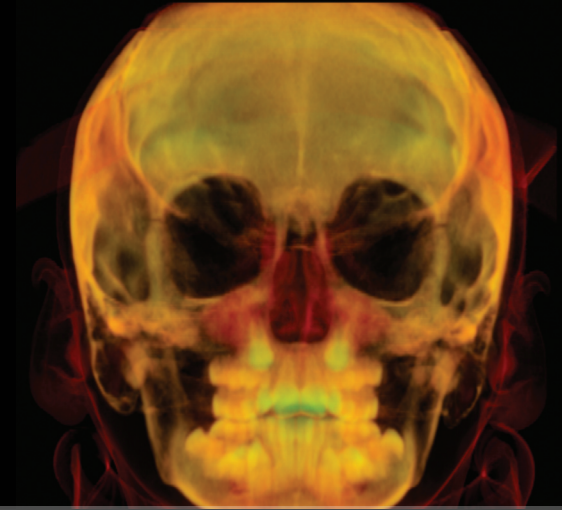
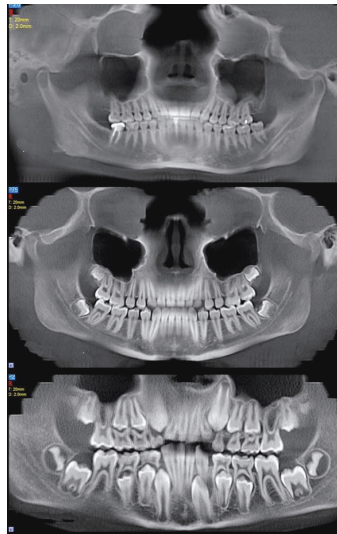
From one low-dose NewTom 3G scan, an unlimited number of diagnostic images are created: cephalometrics, panoramics, cross-sectionals, axials, sagittals, coronals and 3D images.



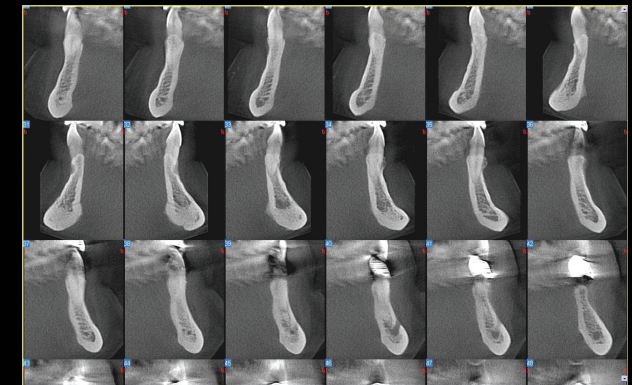
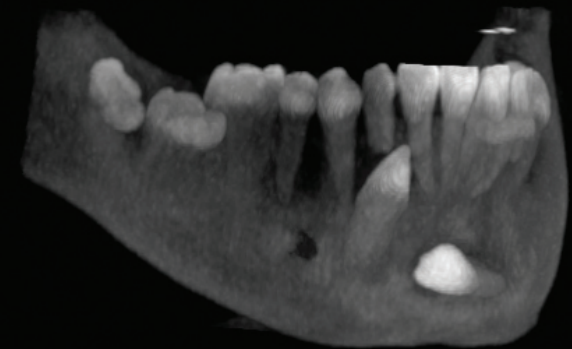
Largest Field of View

Limited Patient Movement

Two Models Available



NewTom 3G



NewTom 3G Specifications

X-ray Source	High frequency, constant potential (DC), stationary anode: 110 kV; 1- 15 mA (pulsed mode)
Focal Spot	0.5 - 1.5 (IEC 60336)
X-Ray Cone Beam	Proprietary SafeBeam™ control reduces radiation based on patient size
Effective Dose	60 μSv (ICRP 2007, estimate for adult)
X-ray Emission Time	5s approximately
Image Acquisition	360 Images - 360 degree rotation
Image Detector	Image intensifier and CCD camera, 1004 x 1004 pixels
Signal Grey Scale	12-bit
Voxel Size	Typical and recommended 0.3 mm (dependent on scan setting)
Scan Time	36s
Patient Position	Reclining
Reconstruction Volume	Diameter 7.9" / 20 cm (FOV 12"); 5.9" / 15 cm (FOV 9"); 3.9" / 10 cm (FOV 6")
Reconstruction Time	Approximately 1 minute
Weight	1058 lbs/380 kg gantry only, 480kg with table
Software	NNT™ with free viewer and sharing application
Power Required	200 / 230 v~ (± 10%) 50/60 Hz (± 1%) 4A max

Specifications subject to change without prior notice.



Manufactured in Italy by QR srl,
an AFP Imaging Company
www.afpimaging.com

Free Viewer and Sharing Application

DICOM Conformant

Improved Software Integration

